



Coat

**245gsm Polyester
Cotton**
style: 022

Classic workwear weight industrial coat to suit most normal working environments. Made in industrially launderable poly cotton fabric for optimum durability in its class. The garment features and high quality manufacturing make this the ideal coat for general industrial use.

Description:

- ✓ 1 Breast Pocket
- ✓ 2 Lower Pockets
- ✓ 2 Piece Back With Centre Vent
- ✓ Plain Cuffs
- ✓ Stud Front
- ✓ Available in regular & tall fit, stocked size range - 92 to 140cm. White, Royal and Navy measured in 4cm increments all other colours in 8cm.

Fabric:

245gsm Poly Cotton

Stock Colours:

Hi White

royal

navy

postman

spruce

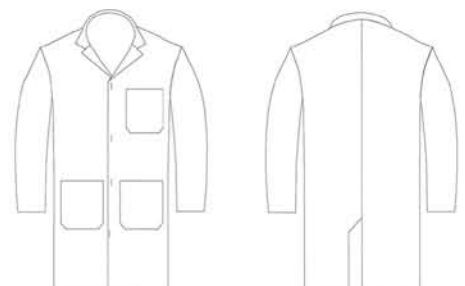
red

Specification:

For use in normal working environments where there are no specific protective clothing requirements.



14406



Wearwell (UK) Limited

Gagarin, Lichfield Road, Tamworth, Staffordshire. B79 7TR
Telephone 01827 63651 - Fax 01827 66139
www.wearwell.co.uk - sales@wearwell.co.uk