

DATASHEET

FULL FACE MASK

PROTECTION AGAINST GAS, VAPOUR & DUST



SERIES 9000

Size S



9001 EasyLock® connector

9004 EN 148-1 connector

Size M



9002 EasyLock® connector

9005 EN 148-1 connector

Size L



9003 EasyLock® connector

9006 EN 148-1 connector

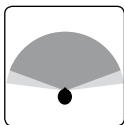
CHARACTERISTICS



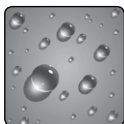
Extremely lightweight
due to frameless construction technology.



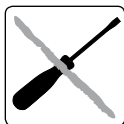
Panoramic lens
Made of polycarbonate.



Periphery vision side panels
Gives unimpeded perception of surrounding environment and movements.



Special hydrophobic coating for easy cleaning
The face shield is liquid-repellent, easy to wipe and resistant to solvents.



Easy to clean. Easy maintenance.
Due to easily accessible components and a clear design and surfaces. No tools needed.



EasyLock® Filtersystem
No additional parts needed.



100% PVC-FREE
All Moldex products and packaging are 100% PVC-free.

CERTIFICATION

The Moldex 9000 Series meet the requirements of EN 136:1998 CL2 and are CE-marked in accordance with the requirements of European Directive 89/686/EEC. The Institut für Arbeitsschutz IFA (BGIA) in St. Augustin (0121) in Germany is the body responsible for both type examination (article 10) and monitoring of production (article 11B). The products are manufactured in an ISO 9001 certified plant.

MATERIAL

Face shield: Polycarbonate

Mask body: Thermoplastic Elastomere (TPE)

Head Harness: Thermoplastic Elastomere (TPE)

Valve cover: Polypropylene (PP)

Inhalation valve: Natural rubber

Exhalation valve: Silicone rubber

WEIGHT

9001: 370 g

9002: 360 g

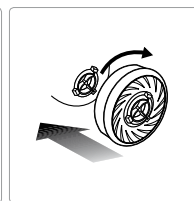
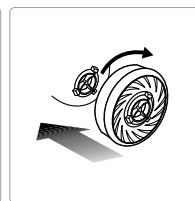
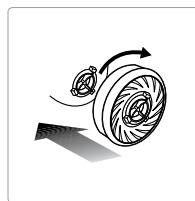
9003: 355 g

9004: 375 g

9005: 365 g

9006: 360 g

EASYLOCK®



Gas filters		Particulate filters		Pre-assembled filter combinations	
Article	Type of filter	Article	Type of filter	Article	Type of filter
9100	A1	9010	P1 R	9120	A1P2 R
9200	A2	9020	P2 R	9230	A2P3 R
9300	ABE1	9030	P3 R	9430	ABEK1P3 R
9400	ABEK1	9022	P2 R + O ₃	9730	ABEK1HgP3 R D
9500	A2B2E1	9032	P3 R + O ₃		
9600	AX				
9800	ABEK2				

DATASHEET

FULL FACE MASK

PROTECTION AGAINST GAS, VAPOUR & DUST



TESTING

The respirators of the Moldex 9000 Series have been tested to EN 136:1998 CL2 and fulfill all requirements of the relevant categories.

Inward leakage of face piece

Ten test subjects wearing respirators perform a variety of exercises on a treadmill. During the exercises the amount of test aerosol that penetrates the face seal and exhalation valve are sampled. The inward leakage of the test contaminant must not exceed a value of 0,05% with any of the test subjects during all exercises performed.

Flammability

Face pieces are passed through a 950°C (+50°C) for 5 seconds at a distance of 250 mm from 6 burner nozzles. After passing through the flame the face-pieces have to self-extinguish.

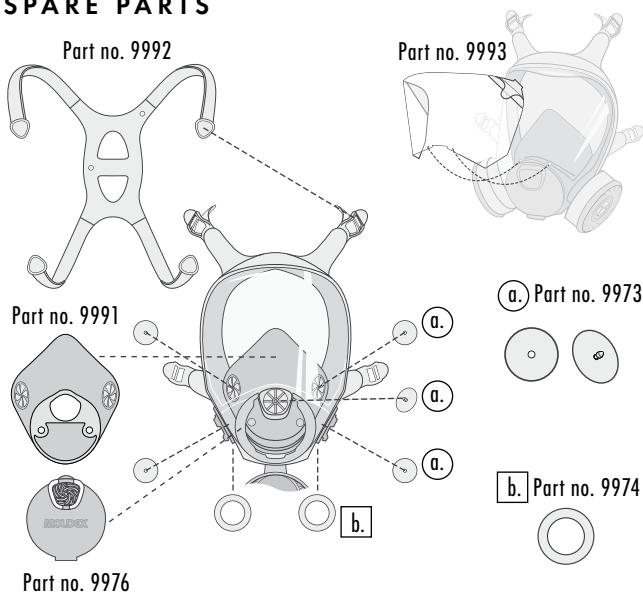
Tensile strength

The connection between mask body and filter has to withstand a maximum tensile force of 500 N.

Mechanical strength

The lens has to withstand the impact of a steel ball that has a diameter of 22 mm and falls on the lens from a height of 1,3 m. After the impact on the lens, the seal of the full face mask has to be maintained.

SPARE PARTS

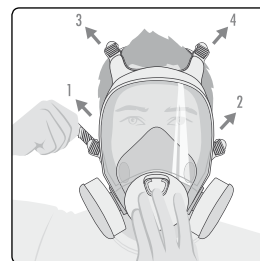
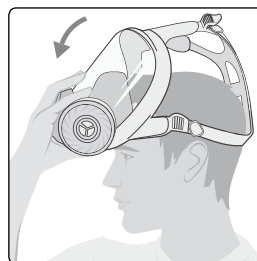


Part no.	Description
9973	Diaphragm kit
9974	Gaskets for EasyLock® connectors
9975	Gaskets for EN 148-1 connectors
9976	Exhale valve cover

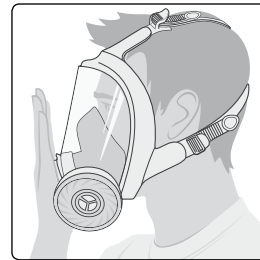
Part no.	Description
9991	Inner nose cup
9992	Head Harness
9993	Faceshield protector
9998	Spectacle kit

INSTRUCTIONS FOR FITTING

Easy On and Off



CHECK OF FACESEAL



IMPORTANT INFORMATION FOR USERS

- This breathing apparatus does not supply oxygen (O₂)
- The product does not contain any metal parts that could cause ignition in potentially explosive atmospheres.
- If you have any questions about how to use the product, please contact MOLDEX-METRIC.
- You must also observe the relevant rules and regulations when using respiratory equipment.
- Under certain circumstances, individuals with beards, long sideburns or other anomalies in the area around the sealing lines, may be unable to achieve a properly sealing fit.
- The masks must not be modified in anyway.
- Read the instruction manual before using the mask. Failure to comply with these instructions on how to use the product and failure to wear the respiratory protection in the polluted area may negatively impact on the health of the user and lead to permanent injury.
- **Caution: Do not use filter equipment in unventilated containers and confined spaces.**

INFO

For help on selection and training please contact us.
We offer a wide range of training packages and support material.

MOLDEX-METRIC AG & Co. KG
Unit 9, Glaisdale Point
Off Glaisdale Drive, Bilborough
Nottingham. NG8 4GP

Tel.: +44 (0)115 985 4288
Fax: +44 (0)115 985 4211
info@uk.moldex-europe.com
www.moldex-europe.com