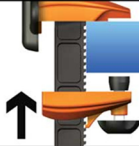


1



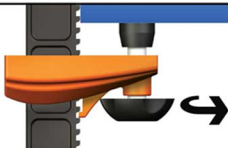
Open the lower clamp fully along the rail and position the upper clamp along the edge of either an horizontal or vertical surface such as a worktop or racking

2



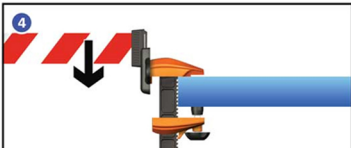
Move the lower clamp along the rail until the stopper comes into contact with the edge of the clamped surface

3



Tighten the bolt head by turning clockwise to push the stopper against the surface and achieve a tight grip. Do not overtighten as this could damage the clamp or the surface

4



Adjust the connector slot to either a horizontal or vertical position (adjust the tightness with an allen key if required). Then simply attach a Skipper XS or a tape end clip

The Skipper **XS** clamp holder/receiver

Upper clamp

Remains static (the lower clamp adjusts the aperture).

Rail

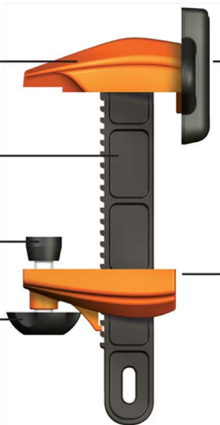
A notched rail which prevents the lower clamp from moving once in place.

Stopper

Makes contact with the edge of the clamped surface

Bolt head

Turn clockwise to tighten the lower clamp once in position.



Connector slot

Rotates to accommodate either a vertical or horizontal attachment. To tighten, screw the connector slot in a clockwise direction. If the connector slot becomes too tight or too loose, adjust with an allen key.

Lower clamp

This moves up and down the rail to the desired aperture.

IMPORTANT NOTICE: Do not overtighten the clamp as this could cause damage to either the clamp or the connected surface