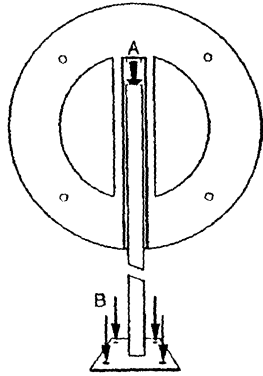
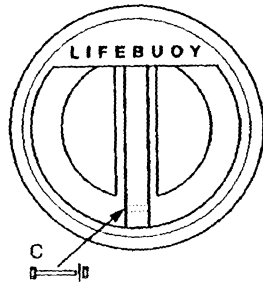


# TS4 & TS7 Lifebuoy Housing Installation Instructions



## POST FIXING

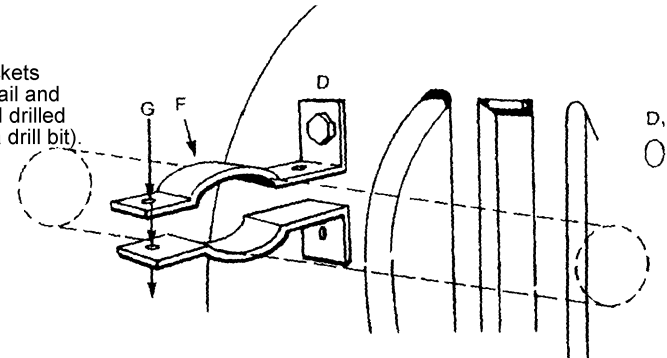
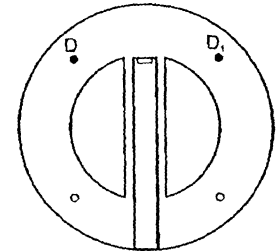
1. Fix post firmly to ground with (4 no 9mm dia x 100mm long bolts 'B'. Or if using straight pole sink into concrete).
2. Locate housing over post recess, locating peg 'A' in top of post.
3. The housing is now located in the correct position. From the front of the housing pass the bolt 'C' through the housing/post/housing, as shown, securing it with washer and nut.



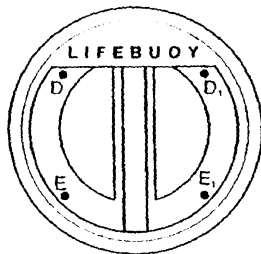
Note: Ensure post is facing correct way to mate up with the housing as the bolt hole in the post is not dead centre !!

## RAIL FIXING

1. Temporarily remove all the bolts from all the brackets.
2. Using the top two pre-drilled bolt holes (D & D), fix one half of a bracket 'F' to each of them with two of the shorter bolts.
3. The housing will now hang on the top rail enabling accurate positioning of the lower halves of the brackets and drilling of the housing (8mm dia drill bit).
4. Using short bolts, fix the bottom half of the brackets to housing. Using the long bolts, clamp bracket halves together 'G'.
5. Bottom rail fixing. The top halves of the brackets can rest over the bottom rail and hole positions marked and drilled through housing (8mm dia drill bit). Repeat 4

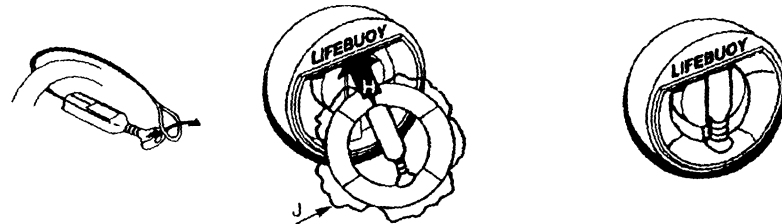


## WALL FIXING



1. Offer housing up to wall and mark the mounting holes on the wall. Drill and plug if necessary and using 4 bolts using collar washers fix the case to the wall, using D & D, first and E & E, last.

## FINALLY



1. Feed line around lifebuoy and feed the line holder through the loop on the end of the line. Pull taut leaving the part of the cable with black sleeve forming the noose around the lifebuoy.
2. Slide lifebuoy and line holder up into the housing recess as shown 'H' and locate over the centre hub. Push whole lifebuoy into housing feeding grab-ropes 'J' around inner rim.